

GENERAL FLOOR PLAN NOTES

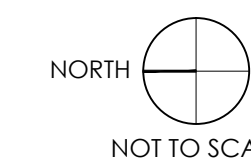
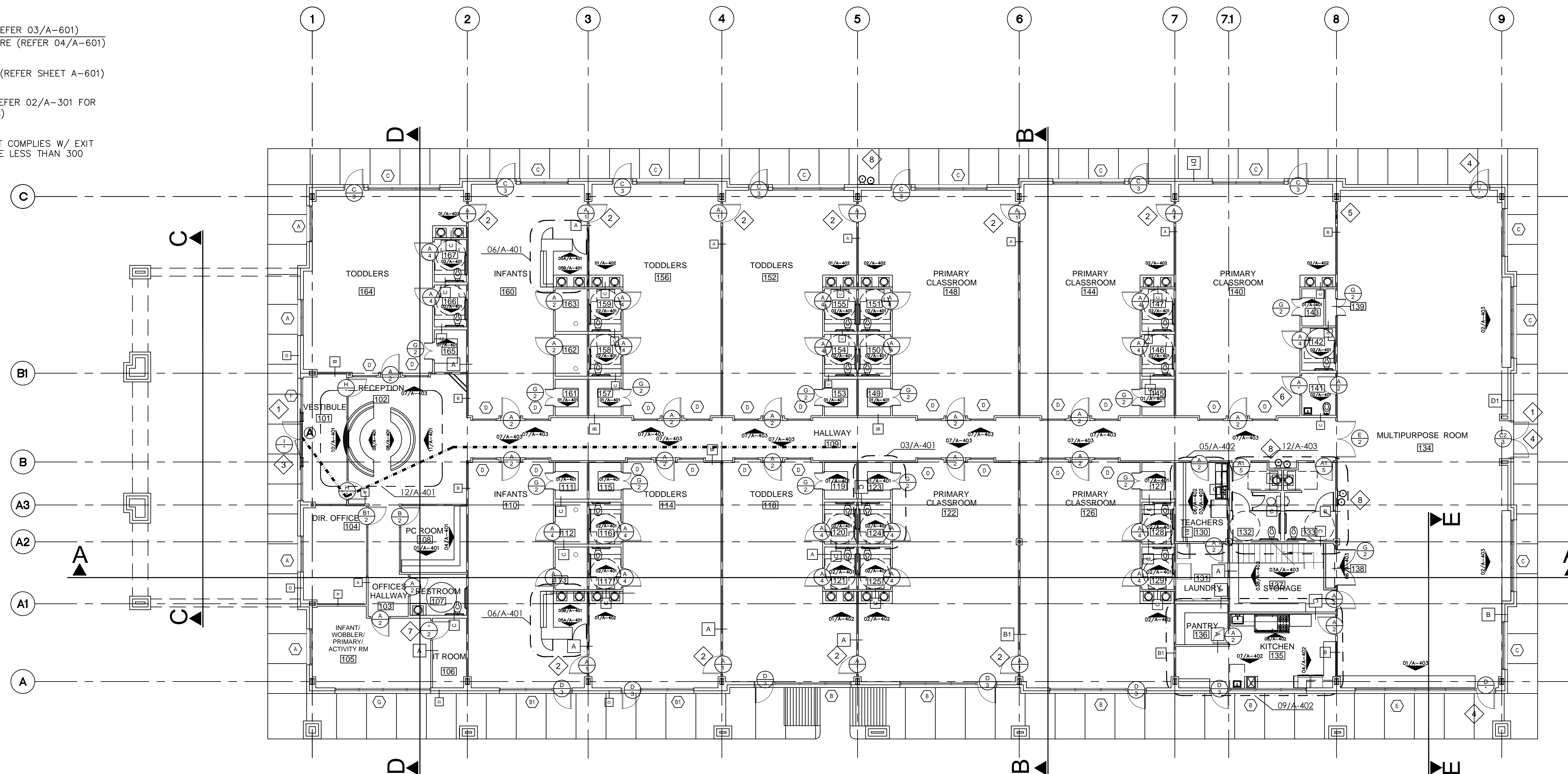
- A. REFER TO ROOM FINISH SCHEDULE FOR ALL SPECIFIC MATERIALS AND FINISHES. ALL PAINT SHALL BE APPLIED IN ACCORDANCE TO THE MANUFACTURER'S SPECIFICATIONS FOR THE PARTICULAR SURFACE. FLAME SPREAD RATINGS FOR INTERIOR FINISHES ARE TO BE IN ACCORDANCE WITH APPLICABLE CODES. ALL CHANGES IN FLOOR MATERIAL BETWEEN ROOMS SHALL OCCUR AT THE CENTER LINE OF THE DOOR UNLESS NOTED OTHERWISE.
- B. ALL CHANGES IN FLOOR MATERIAL BETWEEN ROOMS SHALL OCCUR AT THE CENTER LINE OF THE DOOR UNLESS NOTED OTHERWISE. REFER TO TENANT FOR ALL FINISH AND COLOR SELECTIONS.
- C. REFER TO FLOOR PLAN FOR DOOR TYPE DESIGNATIONS AND SCHEDULE SHEET FOR DOOR AND HARDWARE SCHEDULES. ALL DOORS, FRAMES AND HARDWARE SHALL COMPLY WITH THE REQUIREMENTS OF APPLICABLE CITY AND STATE BUILDINGS CODES. NOTE THAT ALL HARDWARE AT NEW DOORS MUST BE A.D.A. APPROVED LEVER STYLE. CONTACT THE TENANT FOR KEYING AND SECURITY HARDWARE INSTRUCTIONS.
- D. REFER TO FLOOR PLAN KEY NOTES FOR ALL NEW INTERIOR GLAZING AND FRAMING SPECIFICATIONS.

FLOOR PLAN KEYNOTES

- 1 CONCRETE LANDING W/ TOOLED EXPANSION JOINTS AT BUILDING SILL. MAINTAIN LEVEL SURFACE MIN. 60° PERPENDICULAR TO DOOR OPENING AND MAX. 1/4" BELOW BUILDING SILL AT ALL DOOR OPENINGS TO PREVENT WATER INTRUSION. PAVEMENT UP AGAINST THE ENVELOPE OF A BUILDING IS TO SLOPE AWAY FROM THE BUILDING A MINIMUM OF 1/8" PER 1'-0" AND NOT TO EXCEED 2% FOR WATER RUN-OFF.
- 2 AT DOOR INDICATED SUPPLY AND INSTALL DOOR BOLT TO MATCH HARDWARE FINISHES. SUBMIT BOLT CUT SHEET FOR APPROVAL. THIS DOOR IS ONLY USE BY THE TEACHERS NOT A REQUIRED EXIT.
- 3 DOOR INDICATED WILL HAVE BUZZ-IN STRIKE DOOR LOCK SYSTEM BY OWNERS SECURITY VENDOR. LOCK MUST NOT IMPEDE EXITING FROM BUILDING.
- 4 AT DOOR INDICATED SUPPLY AND INSTALL KEY PAD
- 5 CONTRACTOR WILL FRAME DOOR OPENING FOR FUTURE DOOR. COVER WITH GYP BOARD ON BOTH SIDES.
- 6 DOOR INDICATED WILL HAVE LATCH AT CLASSROOM SIDE OF DOOR.
- 7 DOOR INDICATED WILL HAVE LOUVER. REFER TENANT FOR SPECIFICATIONS.
- 8 SUPPLY AND INSTALL DRINKING FOUNTAIN AS SHOWN, REFER PLUMBING DRAWINGS FOR SPECIFICATIONS.

FLOOR PLAN LEGEND

- INDICATES DOOR TYPE (REFER 03/A-601)
- INDICATES DOOR HARDWARE (REFER 04/A-601)
- INDICATES WINDOW TYPE (REFER SHEET A-601)
- INDICATES WALL TYPE (REFER 02/A-301 FOR WALL TYPE DESCRIPTIONS)
- EGRESS PATH A = 99 FT COMPLIES W/ EXIT ACCESS TRAVEL DISTANCE LESS THAN 300 FEET (PER IBC 1016.2)



NO.	DESCRIPTION	DATE
1	FINAL SCHEME	02.01.19
2	REV/FINAL SCHEME	02.07.19
3	CD REVIEW	04.15.19
4	CD ISSUE	06.18.19

Radian
 ARCHITECTURE
 134 Eldridge Road, Suite 77478
 Sage Land, Texas 77478
 FAX: (713) 933 0912

[Signature]
 6/18/19

Project No. 1801.74
 Date 02/11/19
 Drawn by JG
 Checked by NL

Sheet No.
A-101

THESE PLANS ARE COPYRIGHTED AND ARE SUBJECT TO COPYRIGHT PROTECTION AS AN ARCHITECTURAL WORK UNDER SECTION 202 OF THE COPYRIGHT ACT, 17 U.S.C. AS AMENDED DECEMBER 1, 1990, AND KNOWN AS THE ARCHITECTURAL COPYRIGHT PROTECTION ACT OF 1990. THE PROTECTION INCLUDES, BUT IS NOT LIMITED TO, THE OVERALL FORM AS WELL AS THE ARRANGEMENT, DESIGN, AND DIMENSIONS OF THE DRAWINGS AND THE SEPARATE PARTS THEREOF. ANY REPRODUCTION OR TRANSMISSION OF THESE PLANS OR THE FORMS REPRESENTED HEREIN WITHOUT THE WRITTEN PERMISSION OF RADIANT ARCHITECTURE, INC. IS PROHIBITED.

THE MONTESSORIOM AT BELLA TERRA
 23421 FM 1093 RD.
 RICHMOND, TX 77406