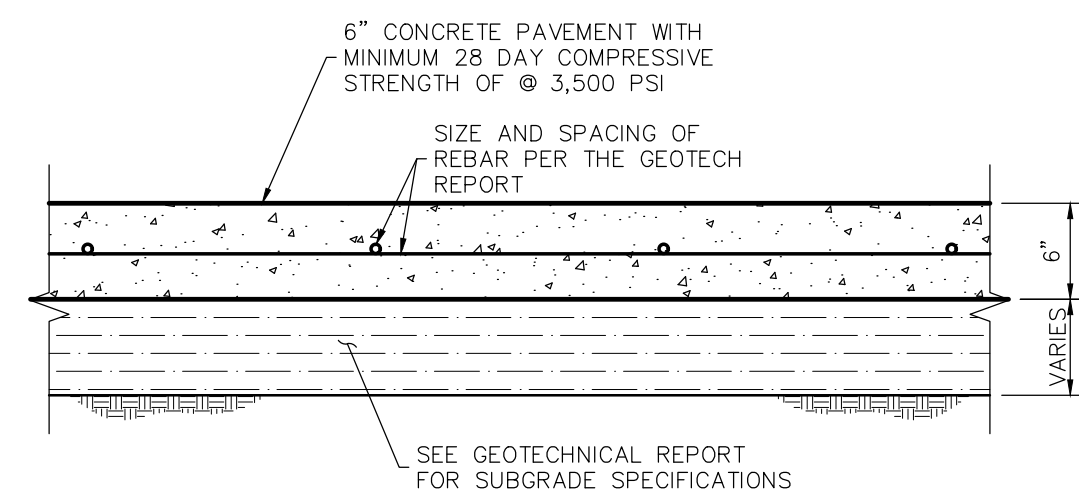
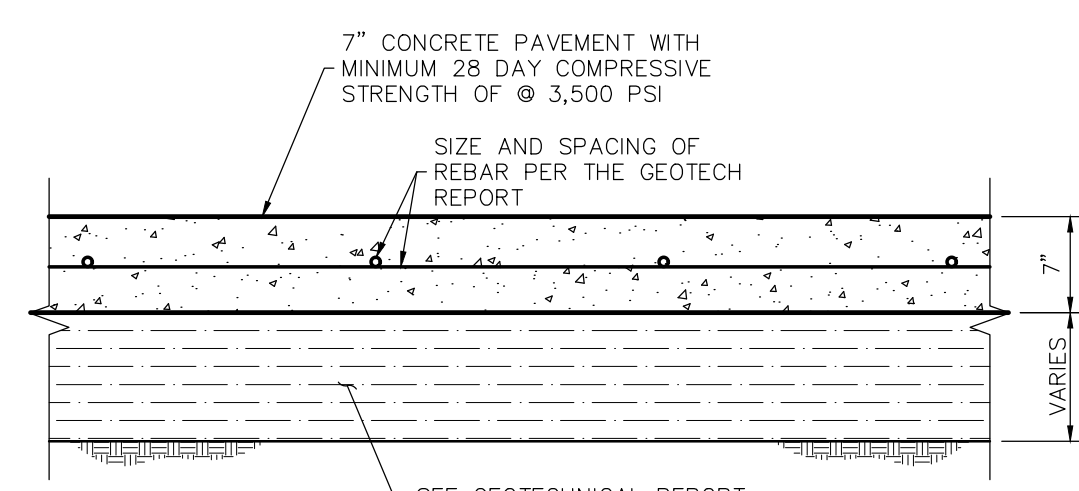


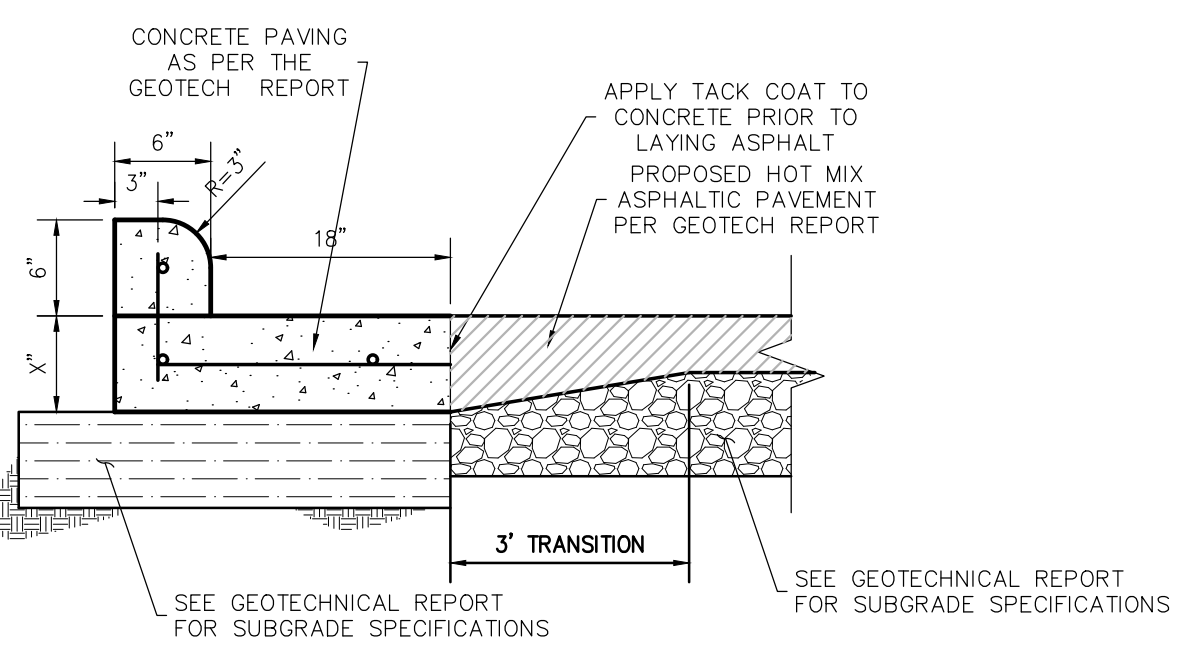
**DETAIL
5" REINFORCED CONCRETE
PAVEMENT**
N.T.S.



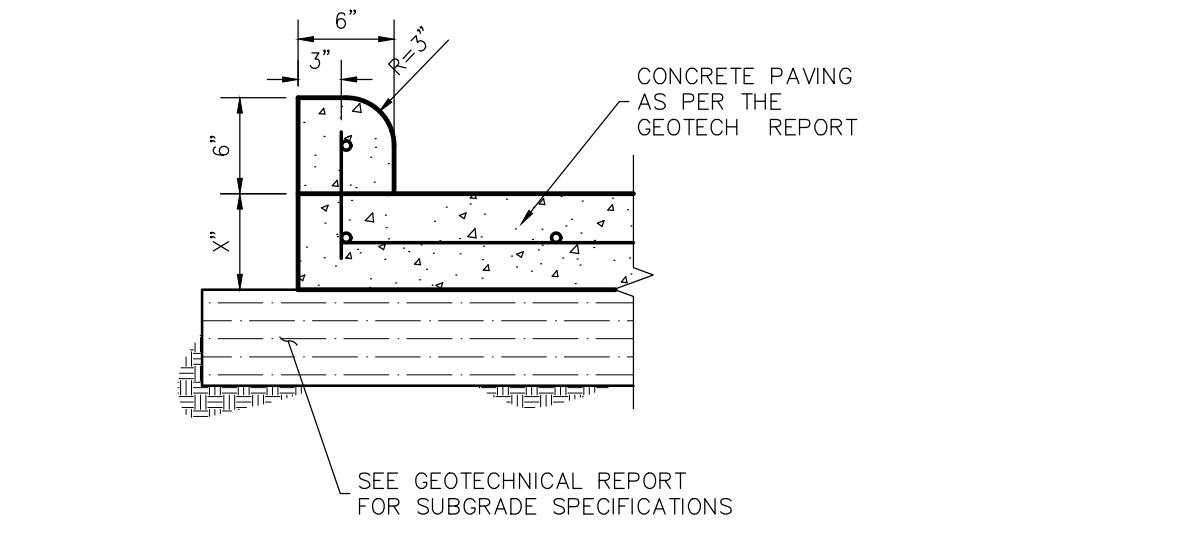
**DETAIL
6" REINFORCED CONCRETE
PAVEMENT**
N.T.S.



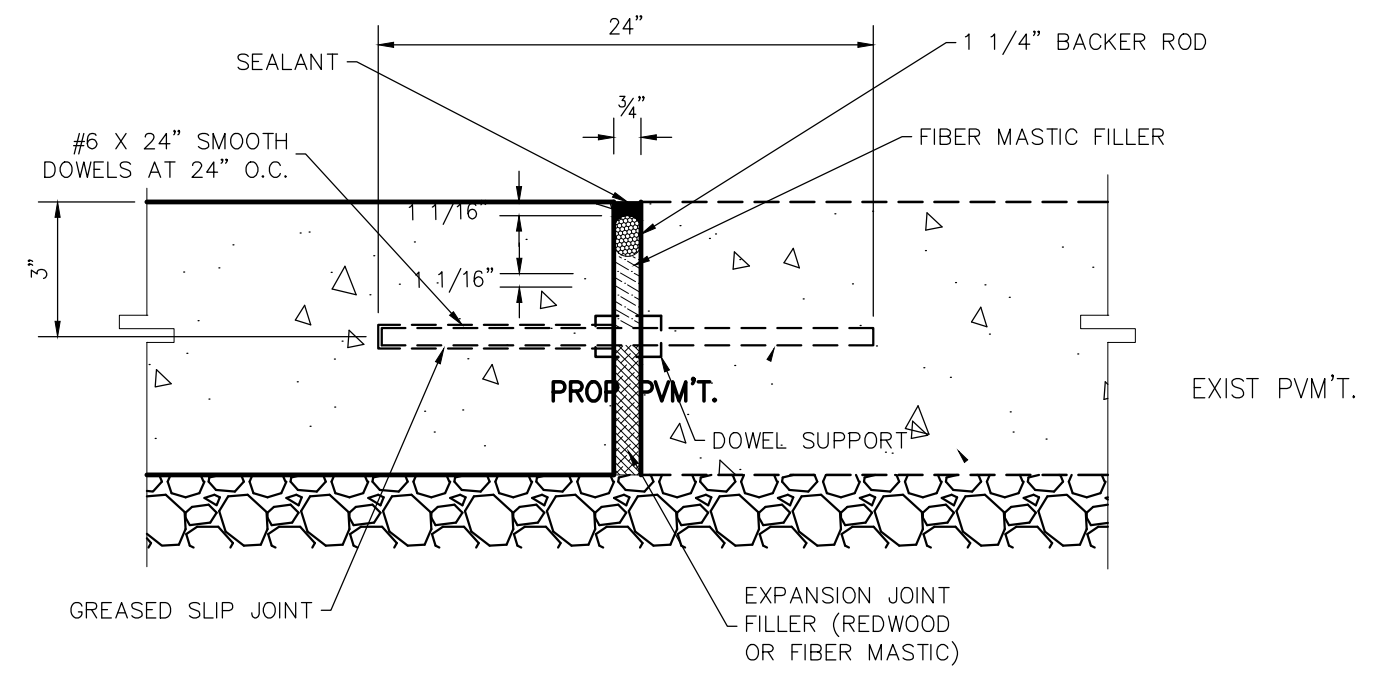
**DETAIL
7" REINFORCED CONCRETE
PAVEMENT**
N.T.S.



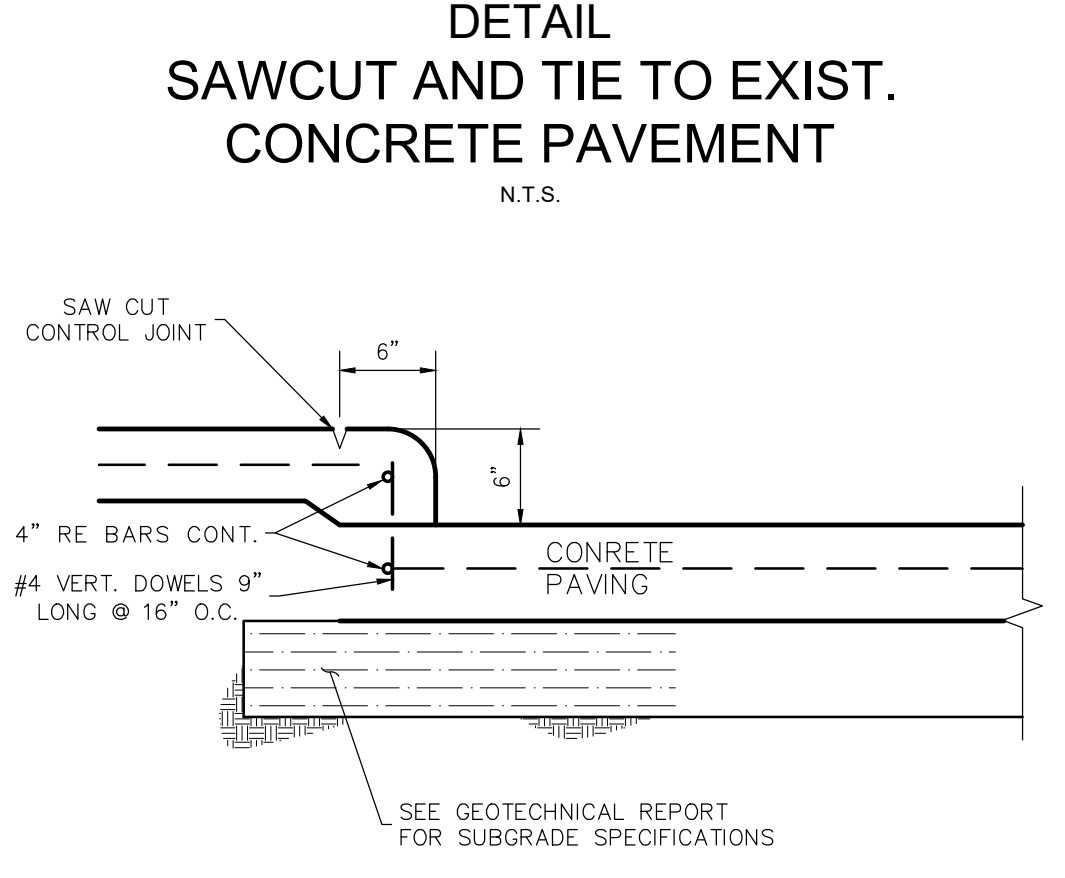
**DETAIL
CONCRETE CURB TO ASPHALT
PAVEMENT TRANSITION**
N.T.S.



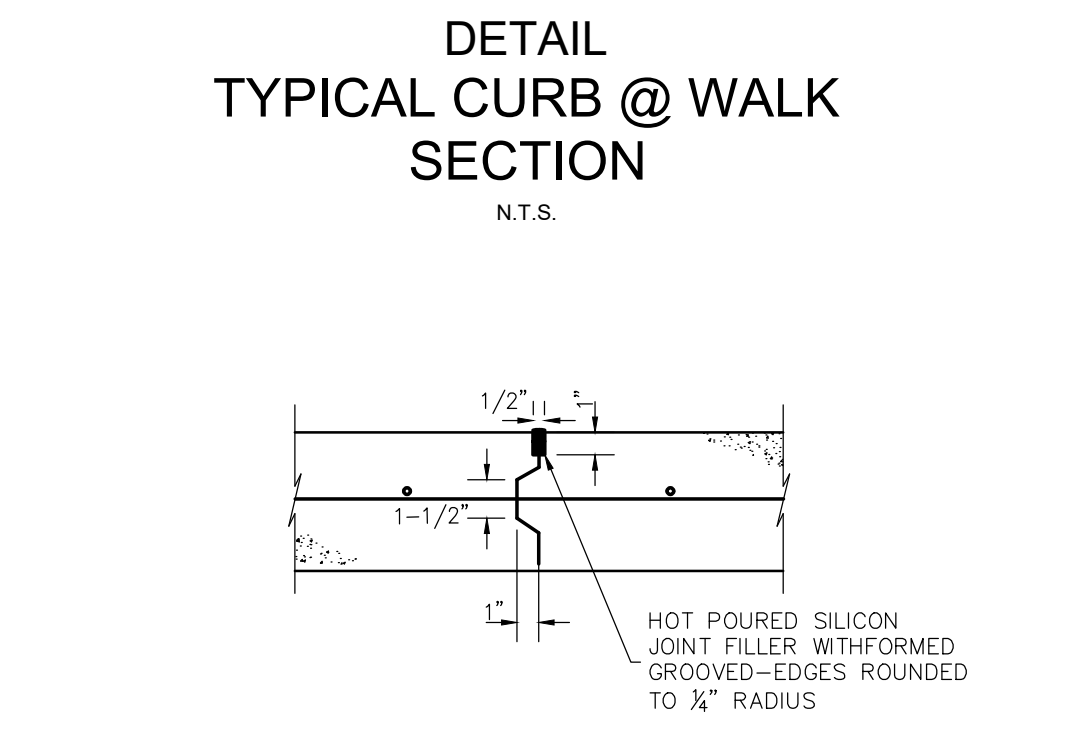
**DETAIL
6" CONCRETE CURB**
N.T.S.



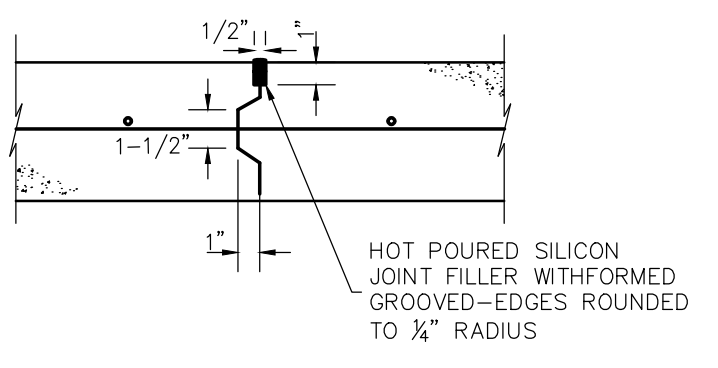
DOWEL TO EXISTING PAVEMENT



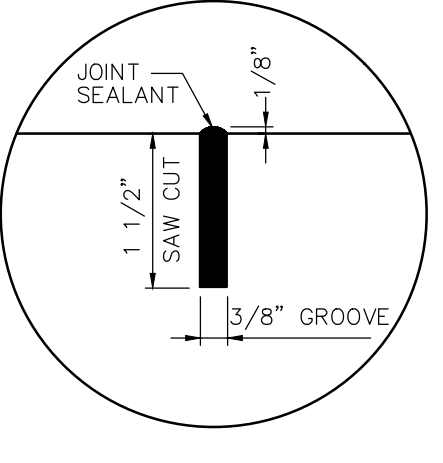
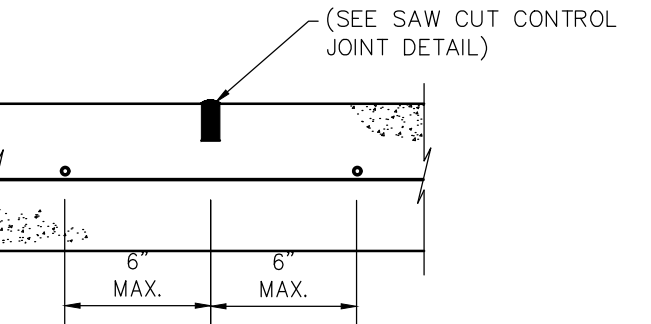
**DETAIL
SAWCUT AND TIE TO EXIST.
CONCRETE PAVEMENT**
N.T.S.



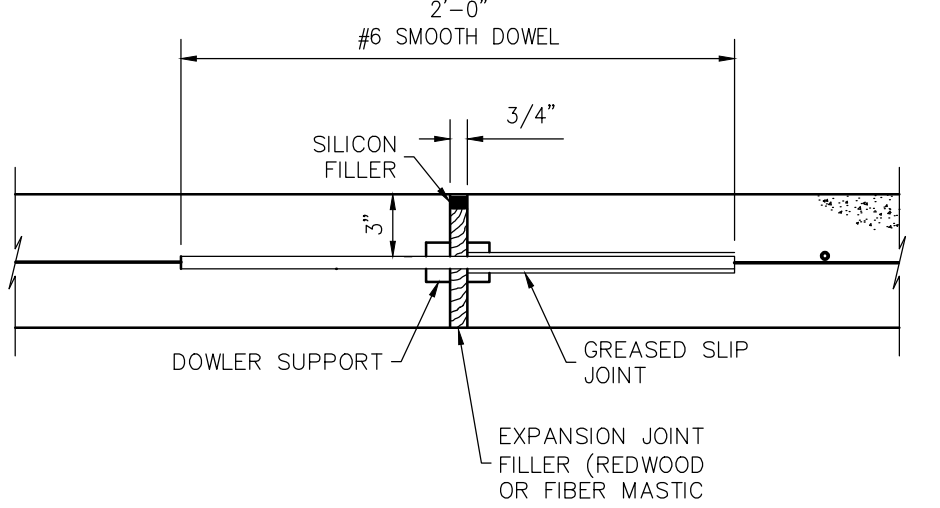
**DETAIL
TYPICAL CURB @ WALK
SECTION**
N.T.S.



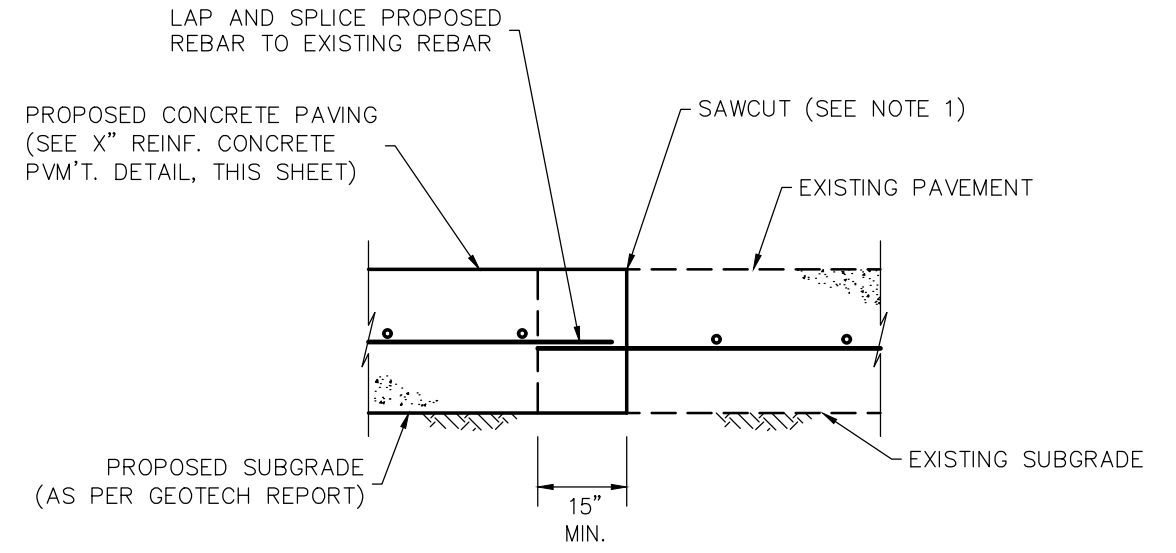
**DETAIL
TYPICAL CONSTRUCTION JOINT**
N.T.S.



**DETAIL
TYPICAL SAW CUT
CONTROL JOINT**
N.T.S.

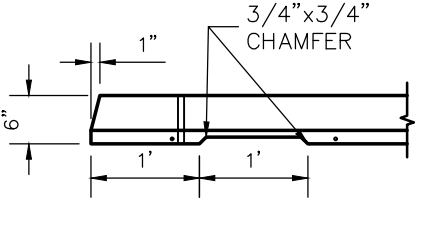
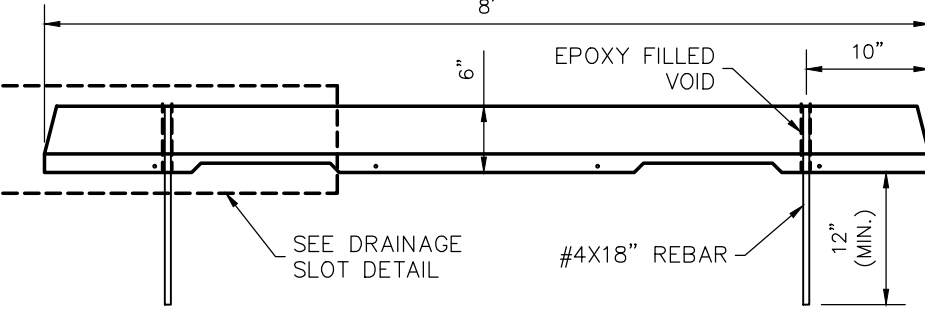
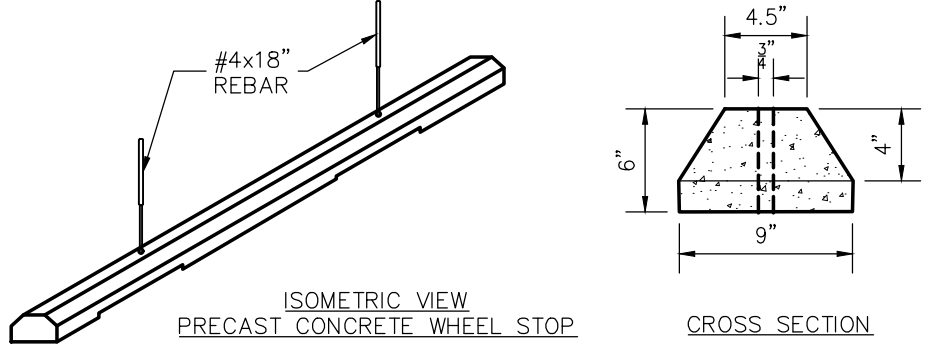


**DETAIL
TYPICAL DOWEL TYPE
EXPANSION JOINT**
N.T.S.

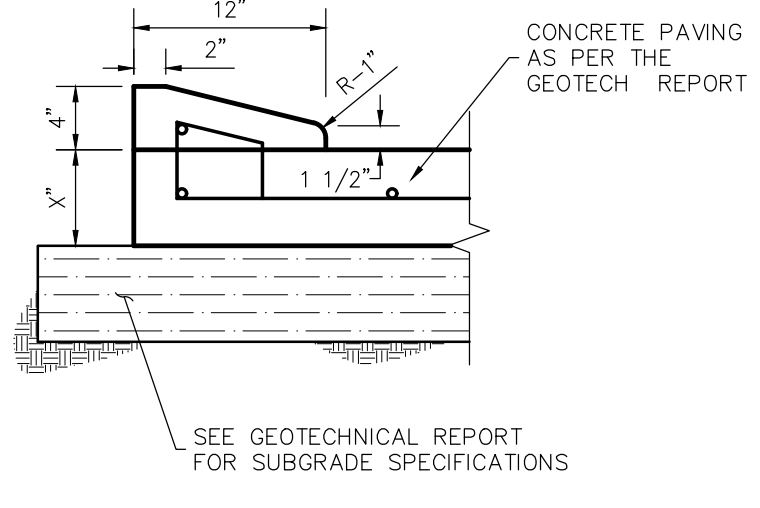


**DETAIL
LAP AND SPLICE**
N.T.S.

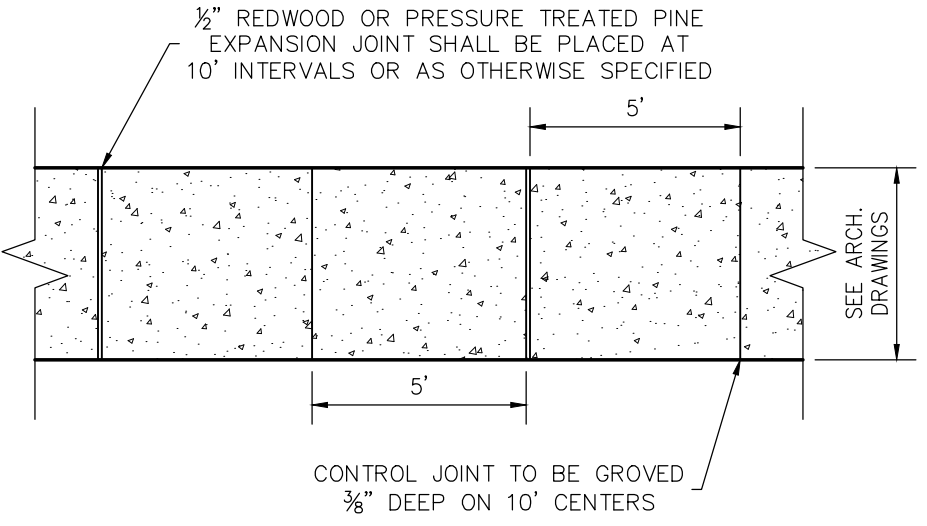
NOTE:
1. SAWCUT AND REMOVE EXISTING PAVING TO EXPOSE 15" MIN. OF EXISTING REBAR. IF NO REBAR EXISTS USE 24" LONG #6 DOWELS @ 24" C-C DRILLED AND EMBEDDED 8" MIN. INTO EXISTING PAVING WITH "PO ROC" OR APPROVED EQUAL.



**DETAIL
PRECAST CONCRETE
WHEEL STOP**
N.T.S.



**DETAIL
4" X 12" CONCRETE CURB**
N.T.S.



**DETAIL
4 1/2" CONCRETE SIDEWALK**
N.T.S.

- ALL EDGES SHALL BE ROUNDED WITH 3/8" RADIUS.
- CONTROL JOINTS SHALL BE SPACE AT 10' INTERVALS.
- CONTROL JOINTS SHALL BE 3/8" DEEP & TROWEL EDGE.
- 1/2" EXPANSION JOINT MATERIAL REQUIRED WHERE SIDEWALKS ABUT BUILDING, CURBS, DRIVEWAYS OR EXISTING SIDEWALKS.
- EXPANSION JOINTS SHALL BE PLACED AT 10' INTERVALS.
- WHERE NEW SIDEWALK IS PLACED AGAINST EXISTING SIDEWALK, SAWCUT EXISTING SIDEWALK TO AN EVEN LINE PRIOR TO INSTALLATION OF THE NEW SIDEWALK.

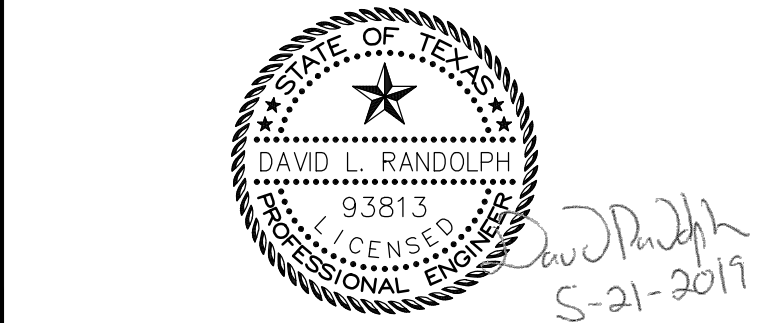
NO.	DATE	REVISIONS	APP.

THIS DOCUMENT AND RELATED DETAILS REMAIN THE PROPERTY OF LENTZ ENGINEERING, LLC. THIS DOCUMENT IS NOT TO BE SOLD, COPIED, OR REPRODUCED WHOLE OR IN PART, WITHOUT THE CONSENT OF LENTZ ENGINEERING, LLC.

5909 WEST LOOP SOUTH, SUITE 200
BELLAIRE, TEXAS 77401
PHONE: 713.839.8900
FAX: 713.839.9000
TBPB REGISTRATION NO. F-001378
www.lentzengineering.net

LENTZ ENGINEERING
THE MONTESSORIUM AT BELLA
TERRA
23241 FM 1093 ROAD, RICHMOND
TEXAS 77406

**CONCRETE PAVING
DETAILS**



DESIGNED BY: D.L.R. DATE: MAY, 2019
APPROVED BY: D.L.R. SCALE: N/A

FBC Engineering Approval