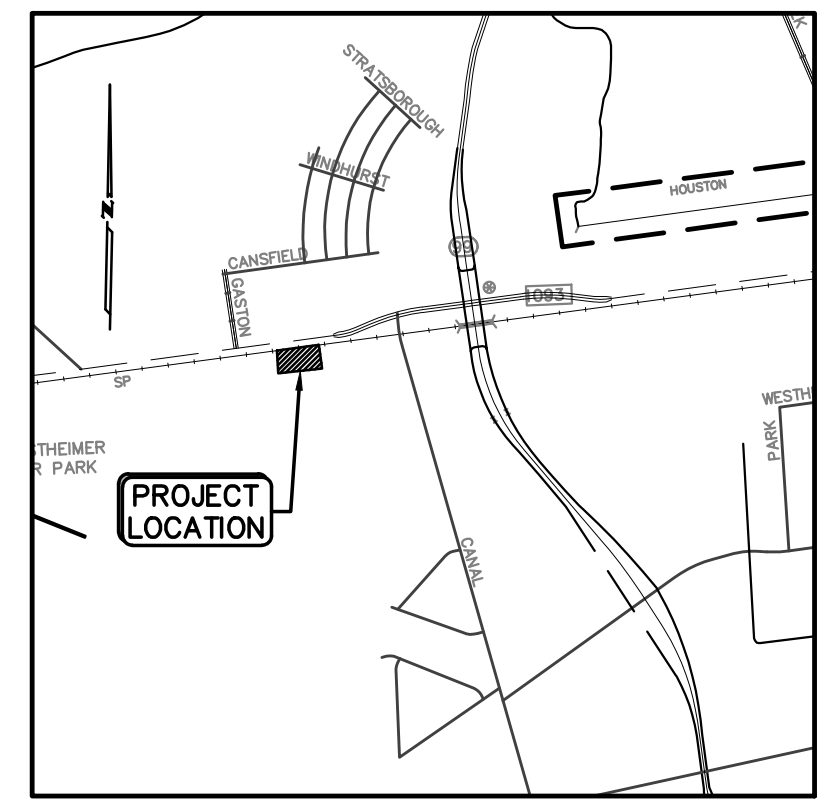


| CURVE TABLE | | | | | |
|-------------|--------|---------|-----------|---------------|----------------|
| CURVE | LENGTH | RADIUS | DELTA | CHORD BEARING | CHORD DISTANCE |
| C1 | 75.70 | 90.00 | 48°11'23" | N17°07'33"E | 73.48 |
| C2 | 46.19 | 30.00 | 88°12'57" | N37°08'20"E | 41.76 |
| C3 | 190.02 | 6524.00 | 1°40'08" | N80°24'45"E | 190.01 |

| LINE TABLE | | |
|------------|--------|-------------|
| LINE | LENGTH | BEARING |
| L1 | 35.08 | N06°58'09"W |

BENCHMARK ELEV. 112.26'
 FORT BEND COUNTY MARKER No. 302 A BRASS DISK IN CONCRETE ON INLET AT THE SOUTHWEST CORNER OF THE INTERSECTION OF KATY GASTON ROAD AND BELLA DRIVE
 ELEV.=112.26 FEET NAVD 88, 2001 ADJUSTMENT
 ELEVATIONS SHOWN ARE 2001 ADJUSTMENT.

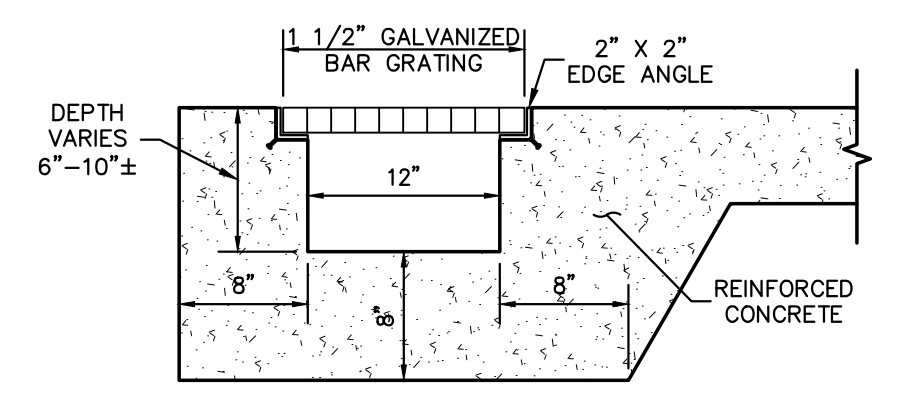
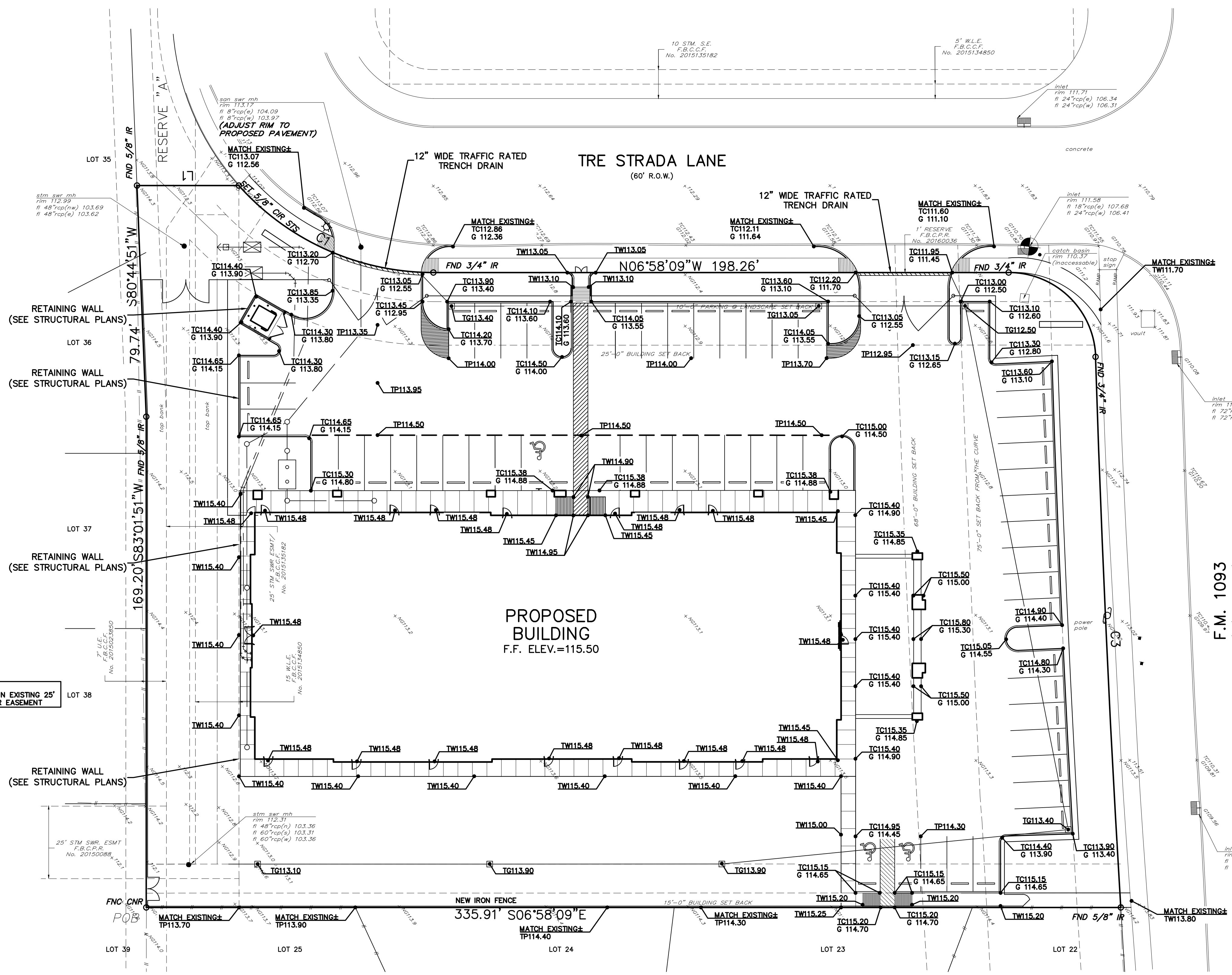
FLOOD STATEMENT
 PROPERTY LIES WITHIN FLOOD ZONE "X". ACCORDING TO F.I.R.M. MAP No. 48157C 0116, DATED 04/02/14, BY GRAPHING PLOTTING ONLY, WE DO NOT ASSUME RESPONSIBILITY FOR EXACT DETERMINATION. BEFORE ANY DEVELOPMENT PLANNING, DESIGN, OR CONSTRUCTION IS STARTED, THE COMMUNITY, CITY AND COUNTY IN WHICH SUBJECT TRACT EXISTS SHOULD BE CONTACTED. SAID ENTITIES MAY IMPOSE LARGER FLOOD PLAIN AND FLOODWAY AREAS THAN SHOWN BY F.I.R.M. MAPS THAT WILL AFFECT DEVELOPMENT.



VICINITY MAP
 SCALE: 1" = 1/2 MI.
 KEY MAP : 525E

| EXISTING | |
|------------|---------------------|
| X 68.0 | ELEVATION |
| X TC 88.10 | TOP OF CURB |
| X G 67.75 | GUTTER |
| rim 68.85 | RIM |
| rim 65.30 | FLOWLINE |
| ● | MANHOLE |
| ○ | CLEAN OUT |
| ○ | POWNER POLE |
| ○ | DOWN GUY |
| ○ | FIRE HYDRANT |
| ○ | WATER VALVE |
| ○ | WATER METER |
| ○ | STREET SIGN |
| ○ | AREA LIGHT |
| ○ | TELEPHONE ENCLOSURE |
| ○ | GAS METER |
| ○ | CHAIN LINK FENCE |
| ○ | BARBED WIRE FENCE |
| ○ | WOOD FENCE |

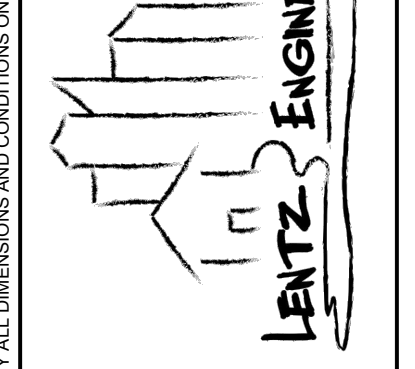
| PROPOSED | |
|----------|--------------------------|
| FF | FINISH FLOOR |
| FL | FLOWLINE |
| FG | FINISHED GRADE |
| TW | TOP OF WALK |
| TR | TOP OF RAMP |
| RCP | REINFORCED CONCRETE PIPE |
| TC | TOP OF CURB |
| G | GUTTER |
| TP | TOP OF PAVEMENT |
| → | STORM SEWER |
| → | DIRECTION OF FLOW |
| — — | GRADE BREAK |
| ○ | TYPE 'A' INLET |
| ○ | STORM SEWER MANHOLE |



DETAIL TRENCH DRAIN
 N.T.S.

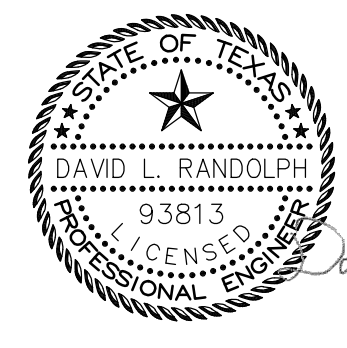
| NO. | DESCRIPTION | DATE |
|-----|------------------|----------|
| 1 | FINAL SCHEME | 02.01.19 |
| 2 | REV FINAL SCHEME | 02.07.19 |
| 3 | CD REVIEW | 04.15.19 |

5800 WEST LOOP SOUTH, SUITE 200
 BELLAIRE, TEXAS 77401
 PHONE: 713.838.9000
 FAX: 713.838.9000
 www.lentz-engineering.com



GRADING PLAN

| | |
|-------------|---------|
| Project No. | 1801.74 |
| Date | |
| Drawn by | |
| Checked by | |
| Sheet No. | C-4 |



FBC Engineering Approval

F:\Data\2019\18006 - Bella Terra Montessoriom\Drawings\LENTZ\9060MASTER.dwg May 21, 2019 1:13:54 PM Rudy De Hopas

THIS DOCUMENT AND RELATED DETAILS REMAIN THE PROPERTY OF LENTZ ENGINEERING, LLC. THIS DOCUMENT IS NOT TO BE SOLD, COPIED, OR REPRODUCED WHOLE OR IN PART, WITHOUT THE CONSENT OF LENTZ ENGINEERING, LLC.