

THE MONTESSORIOM AT BELLA TERRA
 23421 FM 1093 RD.
 RICHMOND, TX 77406

NO.	DESCRIPTION	DATE
1	FINAL SCHEME	02.01.19
2	REVISED SCHEME	02.07.19
3	PERMIT	05.24.19

Radian
 ELECTRICAL ENGINEERS
 134 Lupton, Suite 300
 Sugar Land, Texas 77478
 FAX (713) 933 0912

DATE SIGNED: 05/24/19
 CHRIS L. SARMENTO
 105835
 LICENSED PROFESSIONAL ENGINEER

Project No. 1801.74
 Date 02/11/19
 Drawn by JG
 Checked by NL

Sheet No. **E3.1**

GENERAL NOTES

- COORDINATION OF OVERCURRENT PROTECTIVE DEVICES SHALL BE BY ELECTRICAL CONTRACTOR AT THEIR OWN EXPENSE, INCLUDING SETTINGS OF CIRCUIT BREAKERS, FUSES AND GROUND FAULT DEVICES. CONTRACTOR SHALL PROVIDE COORDINATION STUDY AND SET ALL CIRCUIT PROTECTIVE DEVICE SETTINGS AS RECOMMENDED AT THE COMPLETION OF THE PROJECT.
- ROUTE ALL FEEDERS AND BRANCH CIRCUITS FOR ROOF TOP EQUIPMENT BELOW ROOF DECK. IF INSTALLED UNDER METAL-CORRUGATED SHEET ROOF DECK, PROVIDE A MINIMUM OF 1.5" MEASURED FROM THE LOWEST SURFACE OF THE ROOF DECKING TO THE TOP OF THE CABLE, RACEWAY OR BOX, PER NEC 300.4(E)
- IF GFCI RECEPTACLE IS NOT READILY ACCESSIBLE PER NEC 210.8, CONTRACTOR SHALL INSTALL GFCI BREAKER IN LIEU OF GFCI RECEPTACLE.
- DOORS INTO ELECTRIC PANEL ROOMS, ETC. SHALL BE MARKED WITH A SIGN STATING "ELECTRICAL ROOM" PER 2012 IFC 605.3.1, COORDINATE SIGN LOCATIONS WITH GENERAL CONTRACTOR PRIOR TO ORDERING. TYPICAL ALL BUILDINGS.
- PROVIDE UL LISTED CHILD-PROOF, TAMPER-RESISTANT RECEPTACLE OUTLETS IN ALL CLASSROOMS / CHILD CARE AREAS IN COMPLIANCE WITH NEC 406.14 REQUIREMENTS.

POWER KEYED NOTES

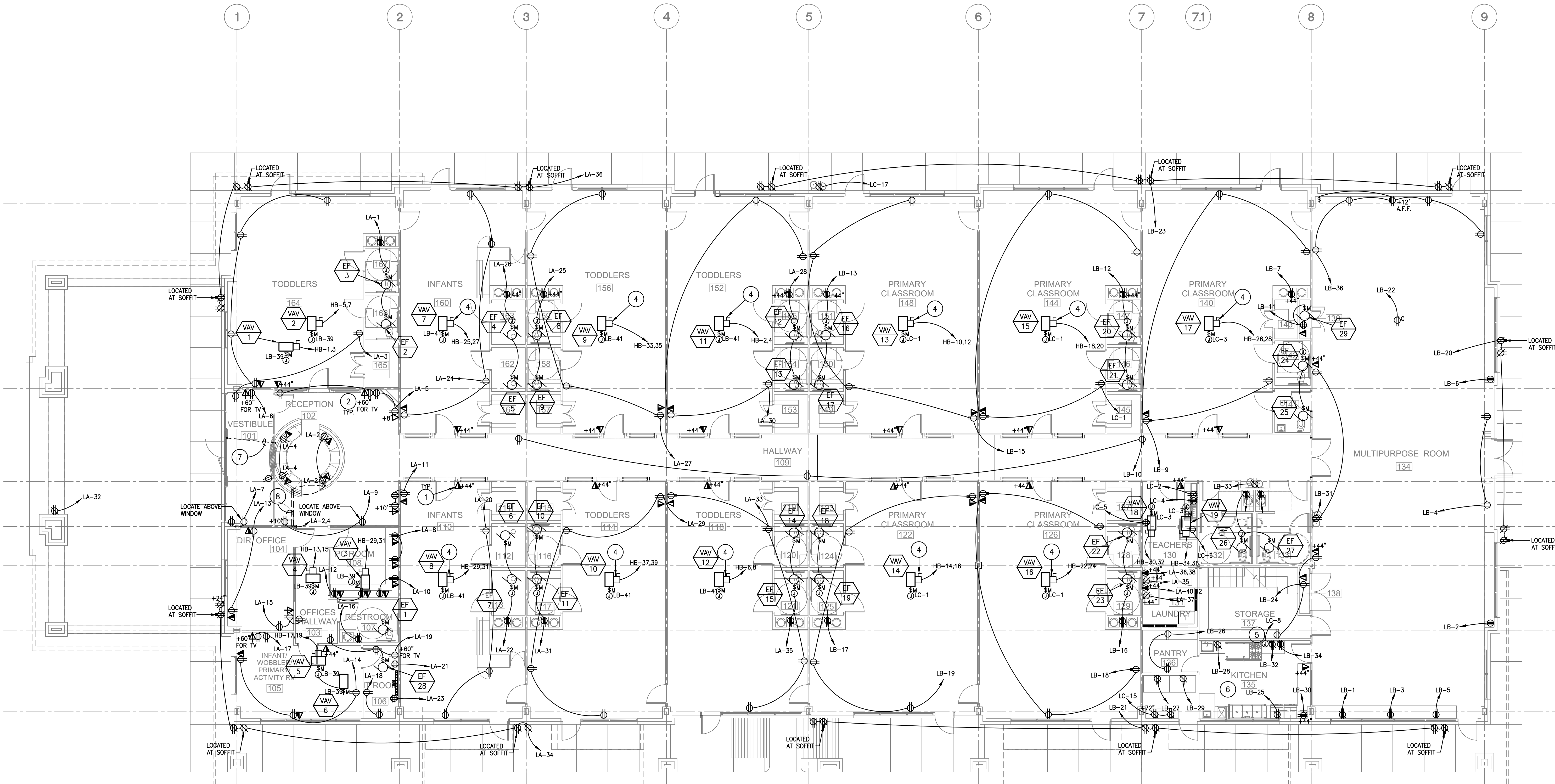
- PROVIDE 120 mm SQ. X 54 mm DEEP (4-11/16" SQ. X 2-1/8" DEEP) J-BOX WITH SINGLE-GANG MUD RING AND 21 mm (3/4") CONDUIT WITH FULLWIRE STUBBED 76 mm (3") INTO ACCESSIBLE CEILING FOR VOICE/DATA.
- TV OUTLET: FIELD VERIFY LOCATION & MOUNTING HEIGHT PRIOR TO INSTALLATION ROUGH-IN. (TYPICAL)
- PROVIDE 120V, 20A, MOTOR RATED SWITCH.
- ELECTRICAL CONTRACTOR SHALL PROVIDE 600V, HD, 30A/2P DISC. SWITCH. INSTALL RK5 FUSES PER MANUFACTURER RECOMMENDATION. COORDINATE WITH MECHANICAL CONTRACTOR PRIOR TO ORDERING.
- J-BOX FOR POWER CONNECTION TO EXHAUST HOOD PACKAGED CONTROL PANEL PROVIDED BY HOOD MANUFACTURER. ELECTRICAL CONTRACTOR TO PROVIDE, INSTALL, AND LAND WIRING BETWEEN HOOD LIGHTS, FAN, HOOD TEMP SENSORS, REMOTE ANSUL SYSTEM MICROSWITCHES, AND ANY OTHER ELECTRICAL COMPONENT REQUIRING AN ELECTRICAL CONNECTION TO THE HOOD CONTROL PACKAGE. REFER TO MANUFACTURER DRAWINGS FOR MORE INFORMATION AND REQUIREMENTS.
- THE ACTUATION OF ANY FIRE SUPPRESSION SYSTEM SHALL AUTOMATICALLY SHUT OFF ALL SOURCES OF FUEL OR POWER TO ALL COOKING EQUIPMENT LOCATED BENEATH THE EXHAUST HOOD AND PROTECTED BY THE SUPPRESSION SYSTEM. REFER TO HOOD MANUFACTURER KITCHEN DRAWINGS FOR CONTROL INTERCONNECTION SYSTEM, AND PLUMBING DRAWINGS FOR AUTOMATIC SHUT-OFF VALVE SYSTEM INTERCONNECTION.
- PROVIDE 3/4" CONDUIT FROM DESK TO DOOR MULLION FOR DOOR RELEASE. COORDINATE WITH OWNER PRIOR TO ROUGH-IN.
- PROVIDE 1" CONDUIT FROM DESK TO WALL ROUTED ABOVE ACCESSIBLE CEILING. COORDINATE WITH OWNER PRIOR TO ROUGH-IN.

FIRE ALARM NOTES:
 FIRE ALARM WILL BE SUBMITTED AS A DEFERRED SUBMITTAL. ALL DEFERRED SUBMITTALS SHALL HAVE PRIOR APPROVAL OF BUILDING OFFICIAL. ANY DEVICES SHOWN ON ELECTRICAL PLANS ARE FOR BID PURPOSES ONLY AND NOT FOR CONSTRUCTION. FIRE ALARM CONTRACTOR IS TO PROVIDE COMPLETE SET OF DRAWINGS AND SUBMIT TO CITY FOR REVIEW AND APPROVAL AS REQUIRED BY AHJ, PRIOR TO START OF WORK.

ENLARGED ELEC RM.
 1/4"=1'-0"

POWER PLAN
 1/8"=1'-0"

POWER PLAN
 1/8"=1'-0"



TEXAS ENGINEER FIRM REGISTRATION #F-15201

ASE ENGINEERING
 25329 Buddie rd. #402, Spring, TX 77380
 aseengineering.com © 713.300.9379

DFT: SAS
 DSN: EV
 CHK: CS
 JOB NO: 190000

THESE DRAWINGS ARE THE PROPERTY OF RADIAN ARCHITECTURE AND MAY NOT BE COPIED OR REPRODUCED WITHOUT THE WRITTEN APPROVAL OF RADIAN ARCHITECTURE. THE ELECTRICAL ENGINEER HAS REVIEWED THE DRAWINGS FOR CONFORMANCE WITH THE NATIONAL ELECTRICAL CODE (NEC) AND THE NATIONAL FIRE ALARM CODE (NFPA). THE ENGINEER'S REVIEW IS LIMITED TO THE ELECTRICAL SYSTEMS SHOWN ON THESE DRAWINGS AND DOES NOT INCLUDE THE MECHANICAL, PLUMBING, OR STRUCTURAL SYSTEMS. THE ENGINEER'S REVIEW IS LIMITED TO THE ELECTRICAL SYSTEMS SHOWN ON THESE DRAWINGS AND DOES NOT INCLUDE THE MECHANICAL, PLUMBING, OR STRUCTURAL SYSTEMS.